



We have raised £300k to replace our depilated prefabricated classroom with an eco-friendly pre-school and areas of biodiversity.

About Us

We are a small and friendly team of staff and volunteers who support Holt pre-school. We are passionate about creating a warm, friendly, inclusive and welcoming place for all children in our community.

Since finding out our building had reached the end of its life and was not going to be replaced, our community has been determined to raise money to fund a new building.



We have raised a magnificent **£300k** so far:

- £260k from community grants
- £38k from fundraising events
- £7k from local businesses
- £6k from community donations



South West Elevation 1 100 @ A3

We have involved the children in the design of our new building which will be eco-friendly with a growing roof, a place to engage with nature, concrete-free foundations, recycling stations, a rainwater wall, a cycle path so that they can scoot or cycle to pre-school, a place to store their bikes and scooters and lots of areas of biodiversity for them to explore.

We want our building to inspire our future generation and to teach them that we can all make a difference.

We will be constructing our new pre-school in July / August 2023 and hope to be able to move into our new pre-school in October 2023.

How can you help?

Due to rising material costs, we are asking for help with the internal fit out of the building. Do you have any contacts who may be able to help? Can you offer any of the items /services that we need at a discount? Can you donate any items or services as a gift to your local community?

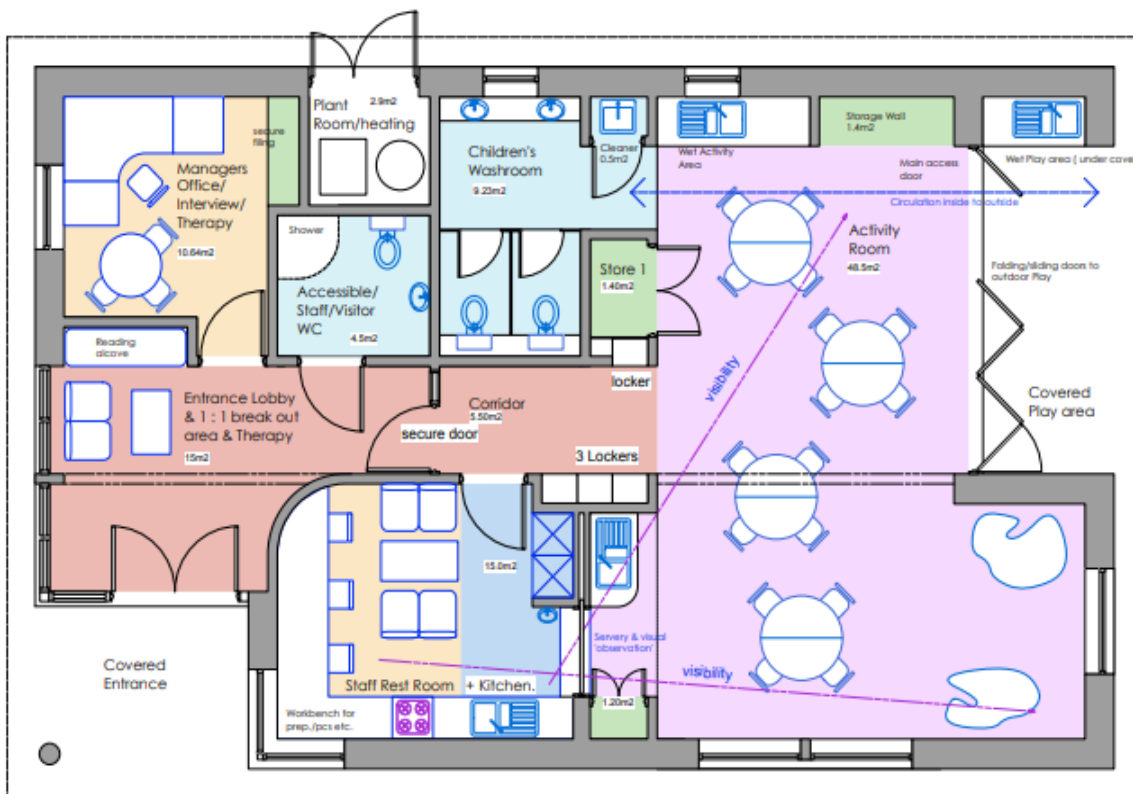
- Windows and external doors including ironmongery.
- Materials for timber stud partition walls, acoustic insulation and plasterboard
- Internal Doors and ironmongery
- Window Blinds
- Wall Finishes - Painting and Tiling (W.C Area and splashbacks)
- Floor Finishes - Carpet Tiles and Vinyl
- Ceiling Finishes (plasterboard and plastering)
- Shelving and Storage Units
- Kitchenette, Appliances (hob/oven, fridge/freezer, washing machine, dishwasher)
- 1 Staff and 2 Children's WC Suites
- Plumbing Supplies and Pipework
- Heat Pump (ASHP), Radiators and Heating Controls
- Lighting
- Fire Detection and Alarm System
- Solar Panels (10 Panels)

Any help would be appreciated and would make a huge difference. For further details of the specifications and quantities of materials required, or for any other information or plans, please contact Kate at finance.holtpreschool@gmail.com.

THANK YOU!

Holt Pre School, Planning 2022

02



Floor Layout 1:50 @ A3 1:25 @ A1



NET INTERNAL AREA 111.27m²
GROSS INTERNAL AREA 120.67m²
GROSS EXTERNAL AREA 141.63m²